



SILICON DRIFT DETECTORS (SDD) LN₂ FREE



SILICON DETECTORS

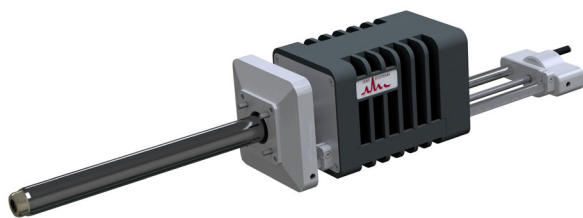
**OUR ELECTRONICS ARE
OPTIMIZED TO PROVIDE TRUE
“DATA STREAMING” FOR THE
FASTEST X-RAY PROCESSING
POSSIBLE**

IXRF's range of electronically cooled (LN_2 free) Silicon Drift Detectors (SDD) are optimized when coupled with an innovative ethernet based digital pulse processor. Specifically configured to each customer, IXRF SDDs provide exceptional and stable performance over a wide range of input count rates to produce rapid x-ray maps.

TECHNICAL SPECIFICATIONS

Sensor Area	Window Option	Resolution eV (Mn K/C)
10mm ²	Light Element (AP3.3) or 8μm Be	≤123-133
30mm ²	Light Element (AP3.3) or 8μm Be	≤126-133
60mm ²	Light Element (AP3.3) or 8μm Be	≤126-133
100mm ²	Light Element (AP3.3) or 8μm Be	≤128-133

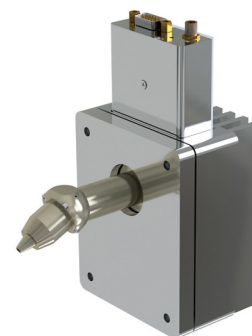
Detectors are available in both EDS (SEM mounted with slide assembly) and XRF (various designs, no slide) formats. Choices of window materials are available, including Beryllium (8μm) and Thin Polymer (for light element x-ray transmission, Sensor active areas of 10mm² to 100mm² are offered. In addition, all of our SEM SDD versions are vibration free.



Large Area SEM
Detector



Standard SEM
Detector



Tapletop SEM
Detector



IXRF Systems, Inc.
10421 Old Manchaca Rd., Suite 620
Austin, TX 78748

Telephone: 512.386.6100
Fax: 512.386.6105
Email: info@ixrfsystems.com